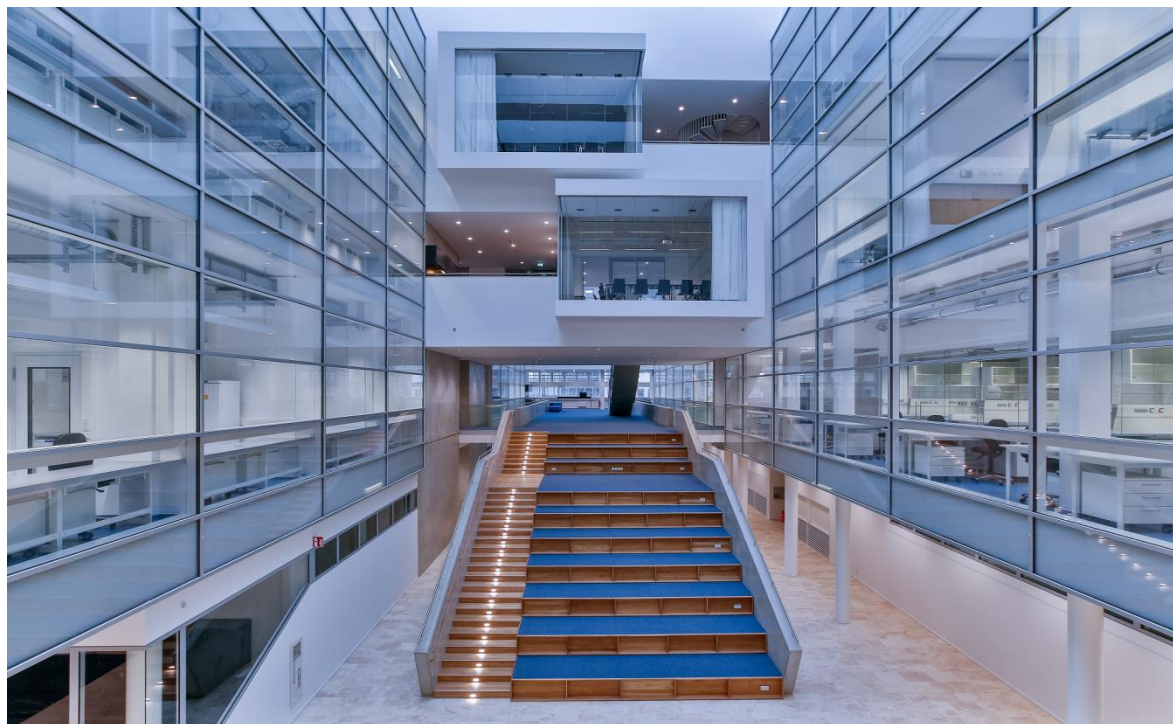


## Venue

The German Clock Club Meeting 2019 will be held in the new **Center of Brain, Behavior and Metabolism** of the University of Lübeck.



The research center was evaluated by the German Council of Science and Humanities of the Federal Government and the State, the construction was completed in 2015. This state-of-the-art center will bring together researchers working in the area of Brain, Hormone and Behavior under one roof.

## Travel

**Lübeck**, the Queen of all the Hanseatic cities, was founded in 1143 as "the first western city on the Baltic coast". Today, its appearance is still characterized by a medieval ambience and by cultural and historical attractions. For more information please have a look at <http://www.luebeck-tourism.de/>

### By Air

Hamburg Airport - <https://www.hamburg-airport.de/en/>  
Lübeck is located approximately 60 km from Hamburg Airport.

The direct subway S1 takes you from Hamburg Airport (Terminal 1 underground) to the Hamburg Main Railway Station (Hbf).

Departure: every 10 minutes. Travel time: 25 minutes.

## By Train

From the Hamburg Main Railway Station you can take the RE train to Lübeck. Departure: every 30 minutes. Travel time: 45 minutes.

## By Bus

The meeting venue CBBM is located in the center of the University campus can be reached easily by bus from the Lübeck city center and the Main Railway Station. Please find the bus stops in the campus map below.

Line 1, Stop "Fachhochschule"

Line 6, Stop "Universität"

Line 4, Stop "Universität"

Line 9, Stop "Fachhochschule", "Universitätsklinikum"

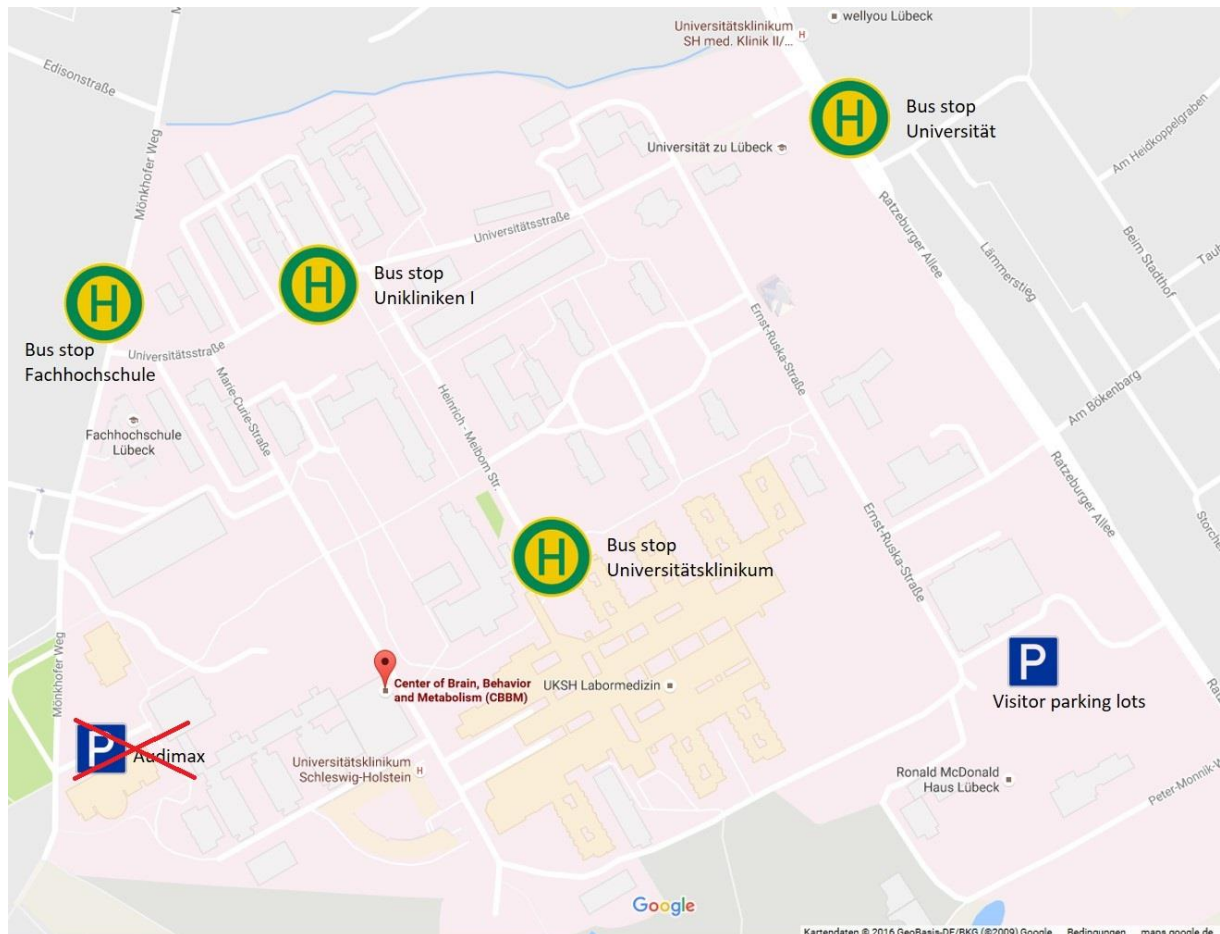
Line 17, Stop "Fachhochschule", "Universitätsklinikum"

<http://www.sv-luebeck.de/en/>

## By Car

Please find the CBBM location (Marie-Curie-Str. 66, 23562 Lübeck) in the [Google map](#).

Visitor parking lot can be used against payment.



## Accommodation

We recommend the following hotels for your visit.

### **Atlantic Hotel Lübeck**

Price for a standard room and breakfast: 112 EUR (please use our University booking code MUL)

<https://www.atlantic-hotels.de/en/hotel-luebeck/contact/>

### **B&B Hotel Lübeck**

Price for a standard room and breakfast: 72,50 EUR

<http://www.hotelbb.de/de/luebeck>

### **Motel One Lübeck**

Price for a standard room and breakfast: 69 EUR

<https://www.motel-one.com/en/hotels/luebeck/>

### **Hotel an der Stadtmauer Lübeck**

Price for a standard single room and breakfast: 60 EUR

<http://www.hotelstadtmauer.de/dashotel1/?L=10>